



## Fire Policy & Procedures

<b>Name of Policy</b>	Fire Policy & Procedures
<b>ISSR</b>	Part 3: Pupils physical and mental health and emotional wellbeing, para 71, 74
<b>Reviewed by</b>	Alleyne's Governing Board
<b>Author/SMT</b>	Guy Collins-Down (Chief Operating Officer)
<b>Date of school review</b>	September 2023
<b>Date of next school review</b>	August 2024

Please read in conjunction with the "Get In, Stay Put procedures" for when evacuation is not appropriate

This policy applies to both the Junior and Senior Schools.

### Index

#### General Points

- Alarm activation
- Procedures for Pupils and Staff
- Safety Points
- Evacuation outside lesson time
- Evacuation plans for pupil using wheelchair

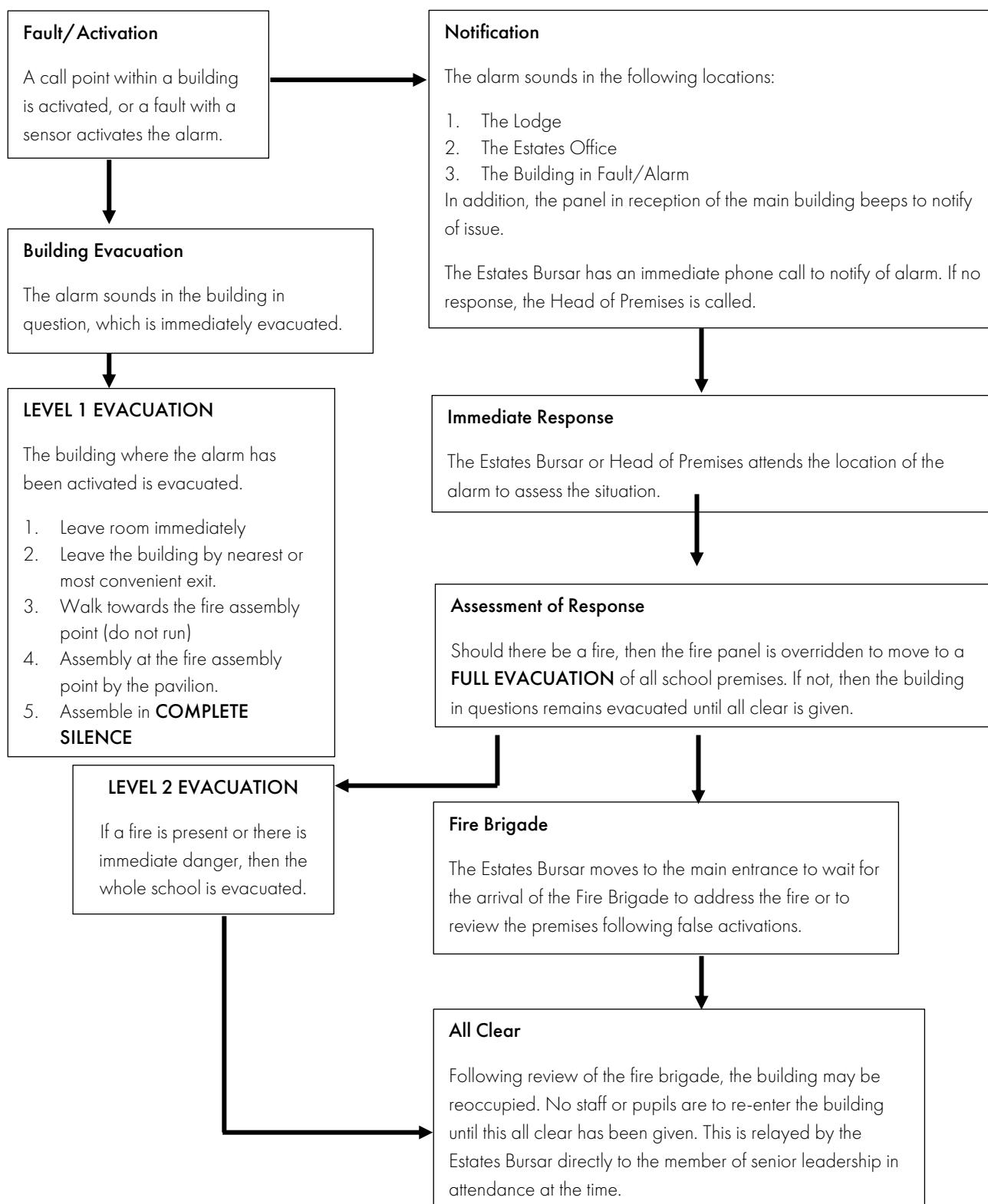
#### Summary Evacuation Plans

Fire and Emergency Staff Duties: LEVEL 1 (Single-Building Evacuation)

Fire and Emergency Staff Duties: LEVEL 2 (Full-School Evacuation)

- Appendix 1: Fire Assembly Points
- Appendix 2: Fire Evacuation Map
- Appendix 3: Fire Alarm Arrangements
- Appendix 4: Fire Training
- Appendix 5: Fire Warden Duties
- Appendix 6: Fire in the Armoury
- Appendix 7: Fire Wardens – List of Names/Areas
- Appendix 8: Personal Emergency Evacuation Plans (PEEPS)

## Fire Response Chart



## General Points

The Governors, Head and the Senior Management Team ensure the safety of everyone legally on the School site including pupils, staff and visitors. Everyone on the site is provided with fire safety information. All staff are provided with Fire Safety training. Fire drills are conducted termly.

- The School system is 'zoned' and activated by heat/smoke detectors and by the usual 'break glass' system. Each zone has a sound alarm which is made familiar by a drill in the first quarter of the academic year and is checked each Monday before school. This means that at a first alarm only the building affected will be evacuated, until such time as a fire or other danger (as opposed to a false alarm) has been discovered. A fire always necessitates a Full-School – Level 2 – evacuation.
- Fire Safety Rules are displayed in every classroom together with an evacuation map showing the route from the exits of each building to the Fire Assembly Points (FAPs).
- Supervision of pupils is paramount. So, if a teacher has to evacuate a building for a Level 1 Single Building evacuation, but has a class waiting or about to start elsewhere, they should first accompany the pupils in the class being taught to the Fire Assembly Point (FAP), and after completing the registration, they should go to the next lesson if it is in a building unaffected by the fire alarm. The zonal alarm system means that it is perfectly safe to remain in a building that does not have an alarm sounding.
- The CCF have an ammunition storage facility where they occasionally hold ammunition in the Armoury. It is on the lower level of the Main Building. Teaching Staff and Support Staff should be aware of this facility, the fire service should be informed, and no one should attempt to fight the fire if any ammunition is involved (see Appendix 6).
- The procedure in an emergency is designed to check that the buildings are evacuated and are empty. At a **LEVEL 1 Single-Building Evacuation** this will be done by class teachers checking timetabled classes from that building at the Year 7 Fire Assembly Point (FAP) on the Playing Fields, see Appendix 2: Fire Evacuation Map. In the event of a Level 1 Building Evacuation, a member of the SMT or the most experienced HoD from the building concerned should take immediate charge of supervising pupils at the Fire Points. If a fire is discovered, a **LEVEL 2 Full-School Evacuation** will be called and all Forms will assemble with their Tutors at the FAPs on the Playing Fields in front of the Pavilion, see Appendix 2: Fire Evacuation Map.

It is worth noting that at BOTH LEVEL 1 and LEVEL 2 alarms, the Fire Brigade is called to attend, and only the Fire Brigade can give the initial permission to return to the building(s).

The following procedures will apply during class time and also between classes, during break and lunch and during assemblies (i.e. 8.30am until 3.45pm).

### Alarm Activation

---

The Alarm bell will be sounded throughout a building following activation of a Call Point in that same building. If required these may be supplemented by a series of short rings on the electric bell or short blasts on a whistle or a hand bell.

Note: The alarms will be tested for approximately 30 seconds every Monday morning at 8.05am -. No action should be taken unless the bell continues. One building is also tested in isolation after the whole-site test, so there may be two bells heard in any one building during the Monday morning test.

### Procedures for Pupils and Staff:

---

#### During registration/lessons

Pupils in the affected building should leave immediately and in silence using the nearest fire exit, accompanied and supervised by staff, leaving all personal belongings behind.

Once outside the building, they should gather at the FAPs; in a LEVEL 1 alarm this is with class teachers at the FAP for Year 7; in a LEVEL 2 alarm this is with tutors (including substitute registration teachers for absent staff), see Fire Evacuation Map, Appendix 2. Pupils should be prevented from approaching the building, entering or re-entering it. Special care should be taken when a lesson is about to start because classes will be heading between buildings. Pupils should be directed to FAPs.

Remind pupils in unaffected buildings that it is perfectly safe to remain in their building unless the fire alarm is sounding in that building.

### **Safety points**

- Staff should close windows and doors if possible before leaving their room last.
- Pupils and staff must not search for/collect belongings.
- Staff should supervise a silent and orderly evacuation of rooms and buildings by the nearest convenient and unobstructed route. NB: the nearest staircases should be used to reach ground level. The lifts in the Edward Alleyn Building, Science Building, Lower School, Library, Swimming Pool building or Junior School should not be used. Fire doors should be closed. Those passing through fire doors should ensure they are closed.
- There MUST be no running or pushing by pupils.
- All pupils must remain silent for the duration of the drill until released by the Senior Deputy Head following registration with their tutor and the accounting for all students by relevant staff.

In addition:

- If possible, laboratory technicians should cut off the gas supply at the main. This should not be done at a practice drill.
- Any traffic entering the School gates should be directed away from School buildings and ordered to stop. No other movement of vehicles should take place on the campus from the first sounding of the Fire Alarm.

### **Return to buildings**

The signal to return will be issued by the Senior Deputy Head, who will be stationed at the Control Point. No one should enter a building until they receive the go ahead, which cannot be given until all affected zones have been checked and the Fire Brigade have given permission to do so. Remember, the rule is: "Get out, stay out".

### **Evacuation outside lesson time**

#### **During Assemblies**

- Pupils should leave the Great Hall using the nearest exit and proceed to the nearest external door, i.e.
  - Rear of Hall door to East side door (facing Astro pitch);
  - Side of Hall doors to Main front door;
  - Gallery to stairwell and to East side door (facing Astro pitch);
- For assemblies in the MCT at Alleyn's, evacuation is by the nearest exit, using the stairs from the upper levels.

#### **Other Assemblies/School Functions**

As above.

#### **During Breaks or Lunch**

All pupils in the Dining Hall, Sixth Form Centre, Library, Reception etc. should leave by the nearest exit and assemble at FAPs on the Playing Fields.

All pupils in corridors should leave the building by the nearest exit and make their way to the FAPs on the Playing Fields. The important safety point is to get outside the building directly. The Main Building front door should only be used by pupils for whom it is the nearest exit (e.g., from the Great Hall).

### During Examinations

Examination Candidates evacuated from the Sports Hall, Old Gym, EAB or computer suites will assemble at a separate FAP in order to comply with examination protocols, see **Appendix 2 – Fire Evacuation Map**. They will be registered and supervised by invigilation staff. Further details will be issued prior to examinations.

### Lower School Evacuation

All classes and staff evacuated from the Lower School building should be directed towards the FAP past the Dining Hall and across the quads, between the EAB and E Block and onto the field.

### Junior School Evacuation

Pupils in the Junior School should leave by the nearest exits with the supervisory member of staff.

### In the event of mechanical failure of the Fire Alarm System

A Fire Watch will be manned by Maintenance/Support staff. The Fire Alarm will be raised by verbal warning "FIRE! FIRE!". This will initiate procedures as per normal evacuations.

### During Holidays

---

The compulsory holiday signing-in procedure is the necessary check on personnel on site. Staff scan their Uniware cards and upon the sound of the fire alarm, the duty Concierge is able to print a list of all staff and visitors on site, providing a register. Level 1 and Level 2 evacuations operate as per a school day evacuation.

## Summary Evacuation Plans

### Level 1 Evacuation (Single-Building Evacuation)

---

**EXIT BY:** nearest clear exit from all rooms as indicated on Fire Evacuation Map (Appendix 2).

**FIRE ASSEMBLY POINT (FAP):** All Senior School pupils and staff in the affected building should use the Fire Assembly Point for Year 7 on the Main Playing Fields by the corner of the Edward Alleyn Building. All Junior School pupils and staff in the affected building should proceed to the JS FAP on the field.

**SUPERVISION:** pupils will assemble in the classes they were in when the alarm went. They will be supervised by the member of staff who had been teaching them at the point when the alarm sounded, or who was about to teach them in that building when the alarm sounded during pupil transfer between buildings. In the event of a Level 1 Building Evacuation, a member of the SMT or the most experienced HoD from the building concerned should take immediate charge of supervising pupils at the Fire Points.

**END OF PROCEDURE:** the Estates Bursar (or their deputy) OR Senior Deputy Head (or their deputy) will issue one of the following instructions:

- Both pupils and staff will be released to return to the affected building as per A: 'Return to buildings', thus ending the evacuation.
- OR the Fire Alarm will be sounded throughout the School and the procedure will move to LEVEL 2 Full-School Evacuation. In this case, pupils will move to their form/tutor group in the appropriate Fire Assembly Point for their year group.

### Level 2 Evacuation (Full-School Evacuation)

---

**EXIT BY:** nearest clear exit from all rooms as indicated on Fire Evacuation Map.

**FIRE ASSEMBLY POINT (FAP):** use Form FAPs arranged by year group on the Main Playing Fields in front of the Pavilion.

**SUPERVISION:** pupils will assemble in their Form/Tutor Group. They will be registered and supervised by their Tutor (or substitute registration staff).

**END OF PROCEDURE:** after stand down by the Fire Brigade, a return to lessons will be announced (by Senior Deputy Head).

## Fire and Emergency Staff Duties: LEVEL 1 (Single-Building Evacuation)

Staff should check for their name or role and highlight any areas of responsibility and action required. [NB – a formal registration of Pupils and Staff is not taken at LEVEL 1, however, any missing pupils should be notified to the Deputy Head (Personnel & Administration) asap].

Member of Staff	Duty
HEAD	IN OVERALL CHARGE
ESTATES BURSAR & SECURITY MANAGER	<ol style="list-style-type: none"> <li>On hearing fire alarm liaise with Reception – Senior Deputy Head (or Deputy Head(s)) to be informed.</li> <li>Proceed to building involved and then if necessary, set off alarms in all other buildings to evacuate pupils.</li> <li>Await arrival of Fire Brigade.</li> </ol> <p>Estates Bursar or Security Manager report to Senior Deputy Head:</p> <ol style="list-style-type: none"> <li>the building involved;</li> <li>that all alarms operated successfully;</li> </ol> <p>any area where assistance may be required and nature of assistance.</p>
MAINTENANCE/SECURITY/ PORTERS	<ol style="list-style-type: none"> <li>Line up, in alphabetical order, at FAP (Support Staff) adjacent to cricket pitch by the MUGA.</li> <li>After assembling, be detailed to take up stations at School gates as directed by the Estates Bursar or Security Manager</li> </ol> <p>On being detailed to man School gates, close the gates to prevent entry into the School apart from the Emergency Services who should be directed to the building concerned.</p>
SECTION ADMINISTRATORS/PA to Deputy Heads/RECEPTION	<p>On being advised of Level 1 Single-Building Evacuation:</p> <ol style="list-style-type: none"> <li>Proceed to Control Point, taking signing-out book from Reception and the teaching staff absence book</li> </ol> <p>Section Administrators take pupil absence lists and signing in sheets</p>
DUTY CONCIERGE	Bring down visitors' log (when alarm sounds during the school holidays, an automatic print-out of all staff and visitors is available. The print-out is delivered to the Control Point).
FIRE WARDENS	Check their designated area according to Fire Warden's duties (Appendix 5) and report to the Chief Operating Officer (COO) at the Fire Wardens FAP. CCF area Fire Warden to inform the Estates Bursar if any ammunition is held in the armoury.
SENIOR DEPUTY HEAD / COO's PA	<ol style="list-style-type: none"> <li>Set up Control Point on Pavilion steps with Deputy Heads. Microphone for PA system is in the Fire Box.</li> <li>Ensure that Fire Box containing building-by-building timetables (for LEVEL 1) and staff and form registers (for LEVEL 2), signing-out sheets for staff and pupils, signing-in late sheets for LS, MS and US and Section absentee lists have been received from Section Administrators.</li> </ol> <p>Receive report from Estates Bursar or Security Manager on which building(s) is affected.</p>
SUPPORT STAFF AND UNATTACHED TEACHING STAFF	<ol style="list-style-type: none"> <li>Assemble, in alphabetical order, at FAP (Support Staff and Unattached Teaching staff) adjacent to cricket pitch.</li> </ol> <p>Section Administrators to assemble at Control Point (Pavilion steps) with Section signing-in-late sheets and Section absentee lists.</p>
SCHOOL NURSE	Main Building Evacuation only.

Member of Staff	Duty
	Check that the Medical Room is evacuated and assemble at Support Staff FAP adjacent to cricket pitch by the MUGA.
HEAD OF CATERING	<ol style="list-style-type: none"> <li>1. Kitchen/ Dining Hall Evacuation only evacuate kitchen staff.</li> </ol> Line up in alphabetical order, next to FAP (Support Staff) adjacent to cricket pitch.
CLASS TEACHERS	<ol style="list-style-type: none"> <li>1. Assemble teaching set at Year 7 Fire Assembly Point (FAP) on the main playing field by corner of Edward Alleyn Building. Junior School should assemble at Junior School FAP.</li> <li>2. Check with available lesson register that class is accounted for.</li> <li>3. Give names of all missing pupils to Section Head/Deputy Head.</li> </ol> <p><b>In the event of a Level 1 Building Evacuation, a member of the SMT or the most experienced HoD from the building concerned should take immediate charge of supervising pupils at the Fire Points.</b></p>
CHIEF OPERATING OFFICER	<ol style="list-style-type: none"> <li>1. Liaise with Support Staff Registrars at FAP (Support Staff) adjacent to cricket pitch.</li> <li>2. Receive confirmation from Fire Wardens that designated areas have been checked and are clear.</li> <li>3. Register Fire Wardens.</li> </ol>
JUNIOR SCHOOL HEAD	Oversee Junior School registration. Receive report on Level 1 Evacuation from Estates Bursar OR Security Manager
DEPUTY HEAD (where available)	<ol style="list-style-type: none"> <li>1. Receive report on Level 1 Evacuation from Estates Bursar OR Security Manager.</li> </ol> Decide on return to classes OR move to Level 2 (Liaise with Bursar and Estates Team).



## Fire and Emergency Staff Duties: LEVEL 2 (Full-School Evacuation)

Staff should check for their name or role and highlight any areas of responsibility and action required.

[NB: A FULL REGISTRATION OF STAFF AND PUPILS IS TAKEN DURING THIS PROCEDURE].

Member of Staff	Duty
HEAD	IN OVERALL CHARGE
ESTATES BURSAR & Security Manager	<ol style="list-style-type: none"> <li>1. On hearing fire alarm report to Reception – Senior Deputy Head/Deputy Head(s) to be informed.</li> <li>2. Proceed to building involved and then, if necessary, set off alarms in all other buildings to evacuate pupils.</li> <li>3. Await arrival of Fire Brigade.</li> <li>4. Estates Bursar or Security Manager Report to Senior Deputy Head/Deputy Head(s): <ol style="list-style-type: none"> <li>a) The building involved;</li> <li>b) That all alarms operated successfully;</li> <li>c) Any area where assistance may be required and nature of assistance;</li> </ol> </li> </ol> <p>Keep Reception informed.</p>
MAINTENANCE/ SECURITY/PORTERS	<ol style="list-style-type: none"> <li>1. Line up at FAP (Support Staff) adjacent to cricket pitch.</li> <li>2. After assembly and registration, be detailed to take up stations at School gates as directed by the Estates Bursar or Security Manager.</li> </ol> <p>On being detailed to man School gates, close the gates to prevent entry into the School apart from the Emergency Services who should be directed to the building concerned.</p>
SCHOOL ADMINISTRATORS/ RECEPTION/DEPUTY HEADS PA	<p>On being advised of a LEVEL 2 Evacuation,</p> <ol style="list-style-type: none"> <li>1. Deputy Heads PA to take staff absence list to Control Point.</li> <li>2. Section Administrators take pupil absence lists and signing in sheets</li> </ol>
FIRE WARDENS	Fire Wardens check buildings in accordance with their list of duties and report to the COO at the Fire Wardens FAP
DUTY CONCIERGE	Bring down visitors' log to Control Point.
SENIOR DEPUTY HEAD / COO'S PA	<ol style="list-style-type: none"> <li>1. Set up Control Point on Pavilion steps with Senior Deputy Head/Deputy Head(s).</li> <li>2. Ensure that unattached teaching staff, support staff and form registers signing-out sheets for staff and pupils, signing-in sheets for LS, MS and US and Section absence lists (where available) have been received from Section Administrators.</li> <li>3. Receive report from Estates Bursar or Security Manager on which building(s) is affected.</li> <li>3. Distribute registers to allocated individuals.</li> <li>4. Receive and collate missing persons reports</li> </ol> <p>ADVISE ON SAFE RETURN TO BUILDINGS</p>
DEPUTY HEAD (ACADEMIC)/ DEPUTY HEAD (PASTORAL)/DEPUTY HEAD (PERSONNEL & ADMINISTRATION) /Asst Hd (Director of Studies) / Asst Head (Teaching and Learning)/ Asst Head (Co-Curricular and Partnerships)	<ol style="list-style-type: none"> <li>1. Deputy Head (Academic) to register Form Tutors Yr 12-13 AND USMT</li> <li>2. Deputy Head (Personnel &amp; Administration) to register Form Tutors Yr 11, Hd of Yr 11 &amp; Heads of House</li> <li>3. Deputy Head (Pastoral) to register Form Tutors Yr 9-10 and Head Yr 9 and 10</li> <li>4. Asst Hd (Dir of Studies) to register Form Tutors Yr 7&amp; 8 AND LSMT</li> <li>5. Asst Hd (Co-curricular &amp; Partnerships) to register unattached staff.</li> </ol>

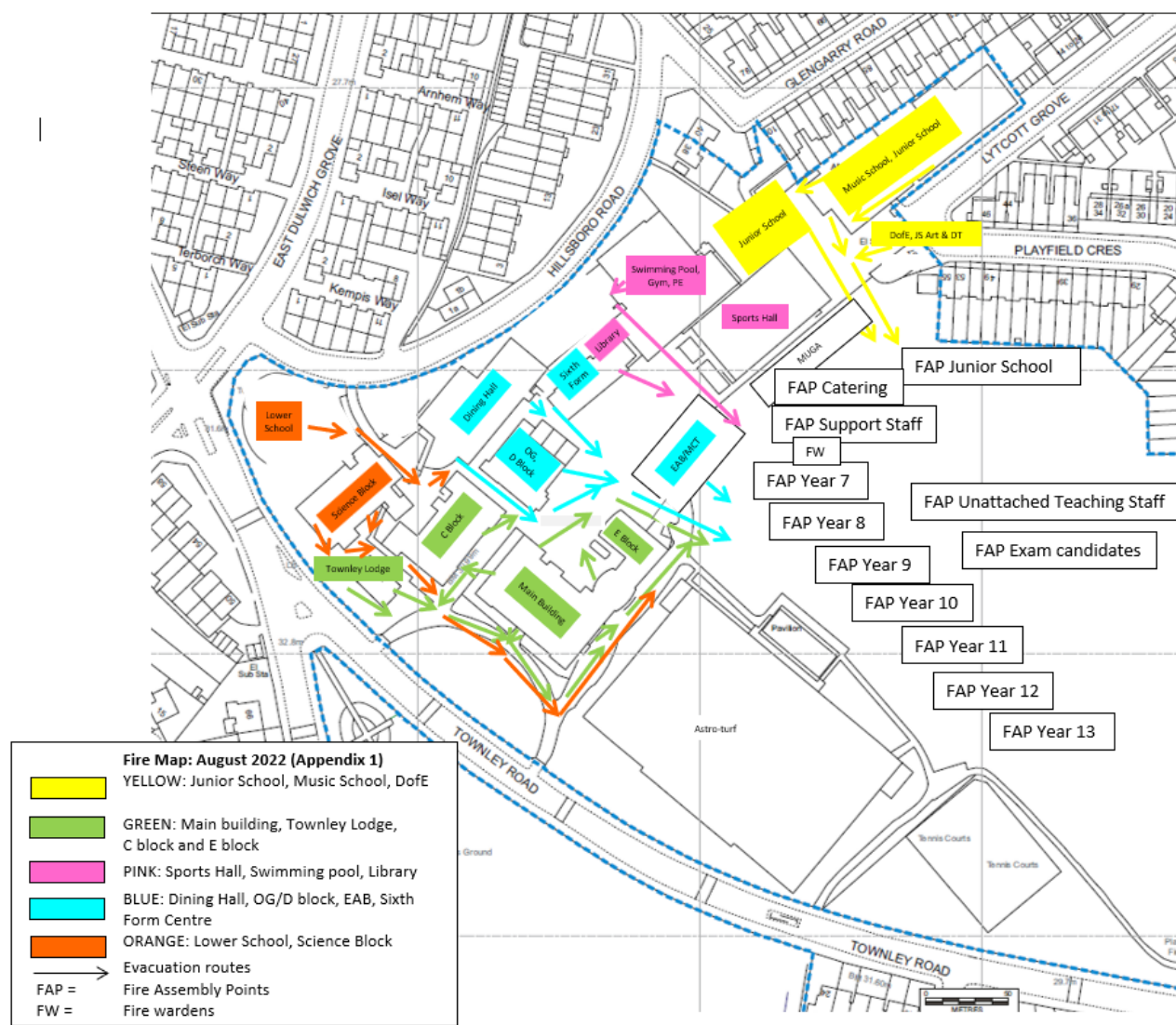
Member of Staff	Duty
	ALL COMPLETED REGISTERS TO DEPUTY HEAD (Personnel & Administration) T COLLATE REGISTER OF ALL TEACHING STAFF
ASSISTANT HEAD (CO-CURRICULAR & PARTNERSHIPS)	1. Assemble, <b>in alphabetical order</b> , at FAP (Unattached Teaching Staff), on field separate from and behind pupils and register staff. Take list to Asst Hd (T&L) to collate Staff List.
SCHOOL NURSE	Check that the sick room is evacuated and assemble at FAP (Support Staff) adjacent to cricket pitch.
CATERING MANAGER	1. Evacuate kitchen staff. Line up with staff at FAP (Support Staff) adjacent to cricket pitch, in alphabetical order. Take register and report to Bursar any staff not accounted for.
SUPPORT STAFF	1. Assemble, in alphabetical order, at FAP (Support Staff) adjacent to cricket pitch, in four lines in alphabetical order. 4. AV Technician to be present on Pavilion steps.
SECTION HEADS JUNIOR SCHOOL: LOWER SCHOOL Head and Heads of Year MIDDLE SCHOOL Head and Heads of Year UPPER SCHOOL Head and Heads of Year & SECTION ADMINISTRATORS, DEPUTY HEADS ASSTS.	1. Collect registers from Fire Box and distribute to form tutors. 2. If any Tutors are absent use Hd Yr or Heads of House to deputise. 3. Compare completed registers with absentee list (from Section Administrators on Pavilion steps). 4. For JS from JS Admin at JS FAP and compile missing pupil lists. Prepare list of missing persons form-by-form (for JS missing persons, hand list to JS Deputy Head or JS Director of Studies).
HEAD OF INSTRUMENTAL STUDIES	Take register of VMTs and hand to Control Point.
FORM TUTORS (INCLUDING COVER REGISTRATION STAFF)	1. Tutor (or the registration cover teacher) join Form at FAP where register will be brought to you by Section Head. 2. Take full register (head counts are not satisfactory). <b>Clearly mark all absent from line with an x.</b> Give names of all missing pupils to Section Head.
EMERGENCY CONTROL DEPUTIES Deputy Head (Personnel & Administration)	<ul style="list-style-type: none"> <li>Appoint deputies for Section Heads, Form Tutors etc.</li> </ul>
COO	1. Liaise with Support Staff Registrars at FAP (Support Staff) adjacent to cricket pitch. 2. Ensure that register is taken of all Support Staff, 3. Ensure register is taken of Fire Wardens. 4. Report to Head any people unaccounted for.
BURSARY STAFF	1. Assemble at FAP (Support Staff) adjacent to cricket pitch and take register. 2. COO's PA to Control Point with Fire Box. <ul style="list-style-type: none"> <li>CFO's PA to take register of support staff.</li> </ul>
JUNIOR SCHOOL HEAD	<ul style="list-style-type: none"> <li>Oversee JS registration. Receive report on Level 2 Evacuation from Estates Bursar OR Security Manager</li> </ul>
ARRANGEMENTS FOR SWIMMING LESSONS (Senior School and Junior School)	<ul style="list-style-type: none"> <li>Get pupils out of the pool, line them up by the door, take the register and send one of the staff to report absences and ensure missing pupils accounted for. Allow back into the water when Deputy Head (Personnel &amp; Administration) advises it is safe to do so.</li> </ul>

## Appendix 1: Fire Assembly Points

Year Group	Form Tutor	Form Group	Form Room
7	Mr Riedel	7A	LS11
	Miss Draper	7B	LS13
	Miss McCutcheon	7C	LS15
	Miss Nicholls	7D	LS01
	Mr Levy	7E	LS03
	Mrs Mines	7F	LS05
8	Mr Caffrey	8A	LS06
	Miss Nartey	8B	LS02
	Mr Maskill	8C	LS04
	Mr Mitchell	8D	LS14
	Mrs Field	8E	LS16
	Mrs Patel	8F	LS12
9	Mr Marshall	9Bn	207
	Miss Copeland	9Br	210
	Mr Wylde	9Cr	012
	Miss Bunch	9Du	010
	Mr Ponton	9Ro	204
	Mr Kwofie	9Sp	302
	Mr Richmond	9Tn	111
	Mr Stephens	9Tu	102
10	Miss Ody	10Bn	202
	Mr O'Neill	10Br	211
	Mr James	10Cr	014
	Dr Hawes	10Du	112
	Mr Sharp	10Ro	205
	Mr Payne	10Sp	305
	Mr Workman	10Tn	216
	Miss Wynter	10Tu	001
	Miss Ody	10Bn	202
11	Ms Platten	11Bn	201
	Mr Saville	11Br	C6
	Miss Massie	11Cr	217

Year Group	Form Tutor	Form Group	Form Room
	Ms Bott	11Du	307
	Miss Poole	11Ro	013
	Ms Disney	11Sp	304
	Ms Kingston	11Tn	103
	Ms Arter-Furlong	11Tu	003
12	Ms Fleming	12BnBr	S10
	Miss Carlsson	12BnSp	218
	Ms Sibona	12BnTu	121
	Mr Piper	12BrDu	D1
	Mr Lothian	12CrRo	S13
	Miss Wright	12CrTn	301
	Mr Strange	12DuBr	025
	Mr Kent	12DuTn	221
	Miss Demain	12RoCr	006
	Ms Pryse-Lloyd	12RoSp	002
	Mr Ford	12SpTu	120
	Mr Stevens	12TnTu	220
13	Miss Schuller	13BnCr	303
	Dr De Silva	13BnTu	S14
	Mrs Doherty	13BrSp	026
	Mr Price	13BrTn	020
	Miss Chambers	13CrRo	EA11
	Ms Ackerman	13CrSp	EA13
	Ms Reynolds	13DuRo	007
	Mr Jones	13DuTn	005
	Mrs Willetts	13DuTu	206
	Miss Martin	13RoTn	EA12
	Dr Moore	13SpBr	S2
	Mrs Franco	13TuBn	S0

## Appendix 2: Fire Evacuation Map



## Appendix 3: Fire Alarm Arrangements

### Technical and Administrative Summary

---

The fire system is linked between all the buildings and also set up to call the fire brigade on a Redcare alert. In a fire, a full evacuation and the quickest possible response by the fire brigade would be vital to save lives. The fire brigade are clear that they will treat any alert from school premises as a priority.

The Estates Bursar walks the buildings on a regular basis to ensure that all fire exits and evacuation routes are clear and can be opened. Fire and smoke detectors, alarms, emergency lighting and extinguishers are all checked annually. Checks are conducted by a competent company/person (ISO9001 certified/BAFE approved).

In the Dining Hall, Sports Hall and EAB Atrium, because of the shape of the spaces, smoke beam detectors are installed. In the Great Hall we have a VESDA (Very Early Smoke Detection Alarm) because of the size of the room and its construction. Elsewhere the system uses smoke/heat detectors and manual call points with a break-glass. Additionally, in the EAB there are smoke vents on all stairs and in the Atrium. The EAB lift will return to park position, with doors open, on the ground floor in the event of the fire alarm sounding.

The system is an L2 system, and so the detectors are positioned to protect corridors and escape routes. This is the standard for schools.

In order to ensure that the system is not triggered unnecessarily and to manage the disruption to the School of any minor incidents which trigger the alarm but are not threatening, the following should be noted.

### Heat Detectors In Sensitive Areas

---

The detectors in the following areas are on Heat setting between 8.00am and 6.00pm. Science, Art, Food Technology, DT, Sixth Form Centre, the EAB café, EAB Auditorium and the Dining Hall Kitchen. This means that the detectors in those areas will only go into alarm mode if they detect a temperature above 60°C. The system will switch over automatically to Heat setting at 8.00am (weekdays and weekends) and back to Smoke at 6.00pm but can be overridden manually at any panel.

### System Delay

---

The School has a 4 minute delay on notification to the Fire Brigade, to allow investigation of any false alarms.

**Copies of fire risk assessments are available from the Bursary.**

## Appendix 4: Fire Training

Staff receive site information relating to fire and basic fire awareness training, soon after they join Alleyn's, with refresher training at appropriate intervals. Fire wardens receive a higher level of training appropriate to their duties.

The basic fire awareness training is a course that covers:

- Chemistry of fire
- Common causes of fire
- Basic safety features in buildings
- Introduction to fire extinguishers
- What to do in cases of fire

The HR department maintain a record of this training.

## Appendix 5: Fire Warden Duties

Fire Wardens have sufficient training, experience and knowledge to carry out their duties. Staff expected to undertake the role of Fire Warden will be expected to:

- Help those on the premises to leave;
- Check the premises to ensure everyone has left;
- Use fire-fighting equipment if safe to do so;
- Perform a supervisory/managing role in any fire situation.

Training for this role may include:

- Detailed knowledge of the fire safety strategy of the premises;
- Awareness of human behaviour in fires;
- How to encourage others to use the most appropriate escape route;
- How to search safely and recognise areas which are unsafe to enter;
- Understanding difficulties that some people, particularly if disabled, may have in escaping under any special evacuation arrangements that have been pre-planned;
- Additional training in the use of fire-fighting equipment;
- Reporting of faults, incidents and near misses.

## Appendix 6: Fire in the Armoury

All staff should be made aware that at certain periods throughout the year, the armoury in the Maths corridor will hold a small amount of small arms ammunition and pyrotechnics. This is a key component to the training of the cadet contingent at Alleyn's School. If a fire develops in the immediate area then there is a risk that the ammunition and pyrotechnics could be involved.

The sign to the right will be displayed in the door to the secure area and will identify to the Fire Service that ammunition and pyrotechnics are in the vicinity. They will then be able to treat the incident with the correct caution as they are trained to do.

An outbreak of fire in the vicinity of ammunition, or amongst the ammunition, is a great and immediate danger to life and property. The safety of people takes priority; cadets must be removed from danger without delay.

In the event of a fire the Local Authority Fire Brigade and other emergency services must be called without delay.

Ultimately, no attempt is to be made to fight any fires where ammunition or explosives have become involved.

For further information and specifics please refer to the CCF Policy on Fire within the Armoury Compound which is held by the CCF SSI.



**Fig 1 Hazard Division 1.4 Sign**

## Appendix 7: Fire Wardens – List of Names/ Areas

Building	Names
Physics Dept, Science Block ground floor	Andreas Tober / Peter Proniewicz-Brooks
Biology Dept, Science Block 1st floor	Felicity Amoaateng / Emma Gee
Chemistry Dept, Science Block 2nd floor	Arthur Haynes / Sidney Reed
Music Building – Upstairs	Alpha Hopkins / Alexander Borland
Music Building – Downstairs	Mathilde Davidson
EAB – ground floor	Peter Stormont
EAB – first floor	Jane Corner
EAB – second floor	Laura Danaher / Anna Sharkey
Lower School – all floors	Felicity De Salis
Library	Esther O'Donnell / Ellen White
IT Building – ground floor	Ben Musson / Nimesh Chauhan
DT/Art– ground floor	Danny Cork / Phil Saville
DT/Art/IT Building – FT suite and IT rooms on the same floor	Ieuan Evans
DT/Art – Art rooms on first and second floor	Ray Brown / Mollie Binnersley
Dining Hall	Natalie Pink / Suzy Linley
Sixth Form Centre	Imelda Alfred / Ryan Pybus
Main building – basement (covering E-Block also)	Mark Stevens / Oliver McDonough
Main building - ground floor (covering E-Block also)	Marlena Slawinski
Main building – first floor (covering E-Block also)	Harriet Cadapen
Main building- second floor (covering E-Block also)	Catriona Ridgway Williams
Townley Lodge	Louise Mawer / Emma Mason Plumb
Sports Hall, changing rooms, dance hall and fitness suite	Louise Campbell / Daniel Bearfoot-Fallon
Pool/changing rooms	Stefan Gibberd
Estates	Tim Pease
Pavilion	Andre Tyndall
The Old Gym/Drama office and Learning Support	Jenny Briggs
Junior School - Rose building	Felicity Thomas / Janet Bowen/ Davina Dawkins
Junior School Exhibition Space	Evgenia Stoikou / Keshia Creary
Junior School Fortune Building - ground floor	Jackie Healy
Junior School Fortune Building - first floor	Showers Jalloh
JS Art room / DoE office	Caroline Dewar
EAC Burbage Road	James Freeman



Building	Names
The Well	Ashleigh Buncombe-Paul
C0	Matilda Smith / David Wicksteed

**This list changes throughout the year as staff change. A master list is kept by the Operations Manager, and can be obtained on request.**

## Appendix 8: Personal Emergency Evacuation Plans (PEEPS)

Any individual who has special requirements during a fire or emergency drill should be in possession of the PEEP which is signed off by the child, their parents and the School nurse.

This plan is created at the time of requirement i.e. after a broken bone which impedes physical movement and describes what the child must do in case of emergency. This is then communicated with all the necessary parties who have care responsibilities for the child. It should be stored with their iSAMs record.

The form for doing so is accessible via the Hub in the Health & Safety section.

---

**ENDS**