



# Technical Rider

The costs for obtaining and transporting additional equipment not specifically noted within this Technical Rider will be the responsibility of the visiting company, please enquire early if you have specific concerns.

Any request to vary the conditions in this rider must be made prior to a minimum of 4 weeks before the hire start date.

## History

The MCT is a modern, flexible performance space usually set up as a medium scale proscenium house with a seating capacity of approximately 350, including accessible wheelchair spaces. The Theatre was completed and opened in 2009. It was designed as a dedicated performance venue within Alleyn's School grounds.

## Contact Information

Theatre / Technical Manager	Pete Stormont <a href="mailto:stormontp@alleyns.org.uk">stormontp@alleyns.org.uk</a>
Deputy Theatre Manager	Aaron Thompson <a href="mailto:thompsonals@alleyns.org.uk">thompsonals@alleyns.org.uk</a>
Venue Technician	Najimat Mansoiboun <a href="mailto:Mansoibounn@alleyns.org.uk">Mansoibounn@alleyns.org.uk</a>
Co-Commercial Director	Oliver Watkins <a href="mailto:watkinso@alleyns.org.uk">watkinso@alleyns.org.uk</a>
Commercial Events Manager	Ayoitunu Babalola <a href="mailto:babalolaa@alleyns.org.uk">babalolaa@alleyns.org.uk</a>
Commercial Events Co-ordinator	Georgina Smith <a href="mailto:smithgs@alleyns.org.uk">smithgs@alleyns.org.uk</a>
Events Manager	Raphaela Zanconato <a href="mailto:zanconato@alleyns.org.uk">zanconato@alleyns.org.uk</a>
Deputy Events Manager	Hollie Tillsley <a href="mailto:tillsleyh@alleyns.org.uk">tillsleyh@alleyns.org.uk</a>
General Enquiries	<a href="mailto:enterprises@alleyns.org.uk">enterprises@alleyns.org.uk</a> (External hires) <a href="mailto:events@alleyns.org.uk">events@alleyns.org.uk</a> (School Events)

## Stage Specifications

Proscenium Opening	8m x 6.5m high (soft masking using house leader and main tabs)
Stage Width	Wall to wall – 13.45m
Stage Depth	Front edge of stage to Upstage wall – 6.55m (8.25m with pit raised)
Stage Height	Front edge of stage to Furthest Upstage fly bar – 6.24m (7.94m with pit raised)
Grid Height on Stage	Maximum bar height from stage – 10.5m Minimum bar height from stage – 1m

### Stage Floor:

Stage floor is a semi-sprung blonde, European Oak floating composite laminate. A black Harlequin Studio vinyl floor is available although this may incur an additional cost. This must be agreed when the contract is agreed.

**No tacks, screws, or nails may be used on the stage**

### Rigging:

The Theatre is equipped with a half-height fly tower above stage with manual-based flying systems. House soft goods are hung on purchased hemp line sets. These cannot be fully flown out of sight lines due to height of fly tower but may be tied up to the bar or swapped out. There are standard RSJ girders front-of-house, located 10.1m above stage level that can be used for rigging points and motor hoists, though required rigging equipment is not in the Theatre inventory.

The on-stage flying system consists of:

- 16 x manual-assist hemp line sets for soft goods – 10m w (Max Load: 75kgs)
- 4 x manual winch hoists for Electrics – 10m wide (Max Load: 450kgs)
- 1 x manual winch hoist for Mid Stage Track – 10m wide (Max Load: 450kgs)
- 1 x manual winch hoist for House Curtain – 11m wide (Max Load: 450kgs)
- 1 x motorised hoist dedicated to a 4:3 Projection Screen (Non-removable)
- Hemp Fly-Rail is 9.3m (Fly Floor is 8m) above stage level on stage right
- Winch Fly-Rail is 9.3m (Fly Floor is 8m) above stage level on stage left
- A full Flys schedule can be found in the Generic Plans & Paperwork

### Soft Goods:

There is a small house stick of additional soft goods available, including:

- House Header: Maroon serge – 11m wide x 3m high
- House Curtain: Maroon serge (75% fullness) – track 11m x 7m high (operated manually from stage level on stage right)
- Black Tab Set: (50% fullness) – track 10m x 7m high (operated manually from stage level on stage right)
- Black Gauze: Seamless – 10m wide x 7m high
- White Cyclorama: Seamless – 10m x 7m high
- Black Serge backcloth: 10m wide x 6m high
- Borders & Legs:
  - 3 sets of Black serge border: 10m wide x 2m high

- 3 pairs of Black serge legs: 1.8m wide x 6m high

#### Scene Dock:

There is a small scene dock behind the stage that can be used as an upstage crossover and contains a small workshop sink. The area is also used for storing the Steinway grand piano and upright personnel lift when they are not in use.

#### Loading Access:

The loading doors are located Upstage Centre, opening onto the stage to allow access to outside through a second set of doors in the scene dock. Stage loading doors are split height with an opening of 3m wide x 3m high (upper doors can be opened to expand the height to 5m). Scene dock loading doors open out to back deck with an opening of 2.7m wide x 2.8m high.

Vehicle access is by a side road to front of Theatre, all equipment/scenic elements must be walked around to back loading doors. Storage onsite is at a premium, if extra storage for equipment or scenic elements is required then this must be agreed when the contract is agreed.

#### Orchestra Facilities:

There is an Orchestra Pit Lift (9.5m wide x 1.7m deep) with pre-set positions for 'pit', 'auditorium' and 'stage' level. As standard, the lift is set at 'Auditorium' level for house seating. The removal of house seating to allow use of the lift as a pit or stage thrust must be agreed when the contract is agreed. There is also a Steinway concert grand piano available, though this must be left on stage during use as it is too large to fit in the orchestra pit – further details are available upon request.

#### Green Rooms:

There are two green rooms at the sides of stage, and both have audio-video show replay/paging monitors:

- Green Room 1: Stage right: 20 adult capacity
- Green Room 2: Stage left: 10 adult capacity

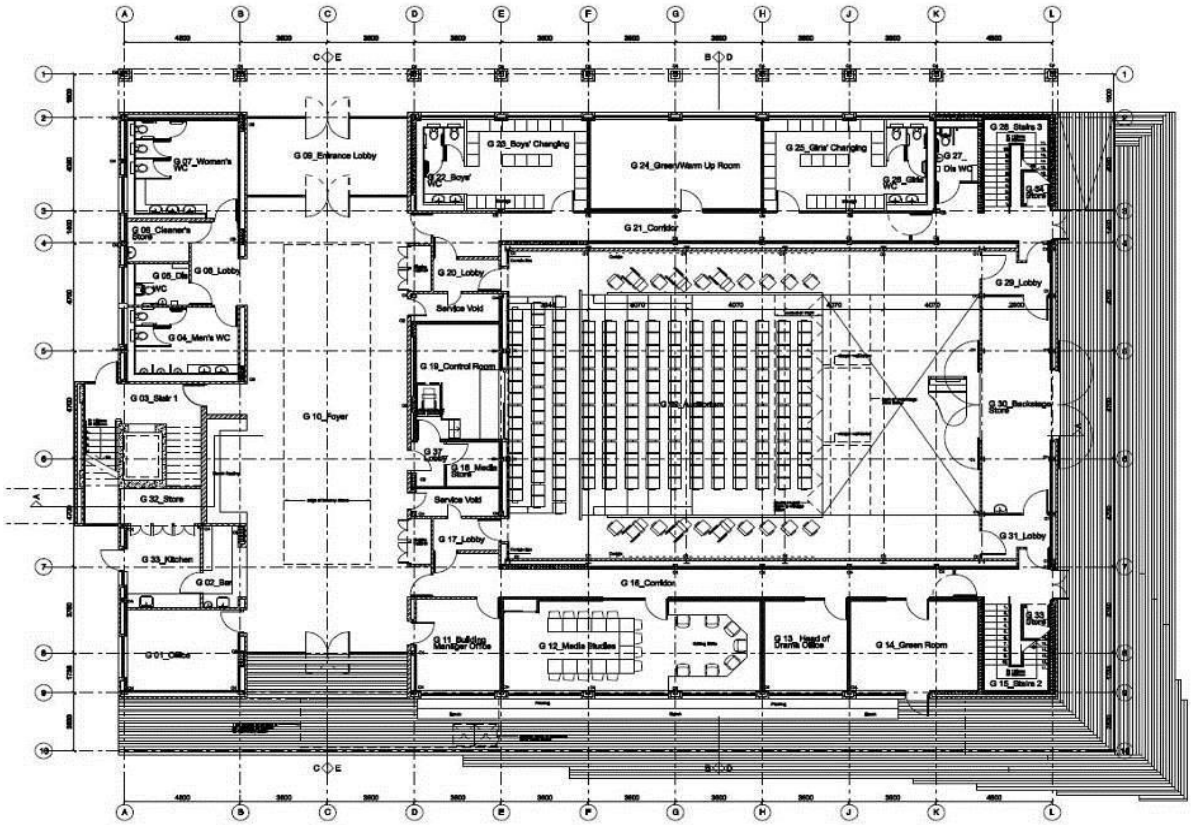
#### Dressing Rooms:

There are two dressing rooms located on stage right, with a capacity of 10 adults each. The rooms are equipped with washing facilities, toilets, benches, and audio show replay/paging. There is also an accessible toilet located next to the dressing rooms. If additional dressing rooms are required, there are three classrooms on the first floor that have audio show replay/paging.

**Please note there are no shower facilities onsite.**

#### Studio Space:

There are other rehearsal spaces onsite available for warm-ups, etc. The use of these spaces may incur an additional charge and must be agreed when the contract is agreed.





## Auditorium Details

Auditorium Width	Wall to wall: 13.45m
Auditorium Length	Front edge of stage to rear of Auditorium (control room window): 13m

### Auditorium Lighting:

Two primary front-of-house lighting bars are located at 8.85m above stage level (located 4.75m and 8.65m from front of stage) accessed by a tension-wire mesh grid. There are also circle lighting bars directly under each of the balconies.

### Auditorium Details:

The ground floor consists of a flexible seating area in front of the stage (9.5m wide x 9.6m deep), that, as standard, is set as an end-on seating arrangement with 223 seats.

This area can be arranged in thrust and in-the-round seating configurations. However, there are additional time/cost implications to have the seating rearranged; therefore, this must be agreed when the contract is agreed. There are additional seating positions around the sides of the stalls at the same height as the stage which can be used as stage entrances from the auditorium.

### Balconies:

The two balconies over the auditorium are located at 2.3m and 5.1m above stage level, the lower balcony holds 75 seats, and the upper balcony holds 56 seats. Located at the rear centre of the upper balcony are the primary follow spot and projection positions.



# Lighting Specifications

## Control:

Strand Light Palette Classic – 1500 channel or Avolites Pearl-Tiger Touch  
(In control room at rear of auditorium)

ELC Focus Hand – Universal DMX Riggers Remote  
(Connected directly to the dimmers)

## Dimmers/Power:

ETC Sensor dimmer and non-dim switch installation rack are housed in a dedicated dimmer room and are hardwired into 16Amp sockets or Socapex outlets located on the fly-floors, front-of-house grid, balconies and on-stage. Most circuits are then cabled to IWBs on the lighting pipes using Socapex extensions. There are locally switched 16Amp and 13Amp sockets on all lighting outlet panels for hot power. See also *Heavy Power* section.

■ -Dim: 22 ways @ 3 Kw

## DMX/CAT5 Tie-Lines:

There are 2 DMX512 inputs (5pin XLR) located in control room, rear of auditorium and rear of scene dock. There are DMX512 outputs at each DMX input position and on each lighting outlet panel located on fly-floors, front-of-house grid and on-stage. There is also a production dedicated CAT5 network (RJ45) with an outlet next to each DMX512 connection. All DMX and CAT5 terminate at a patch panel in dimmer room, which also contains a DMX 4:2 merger and a DMX 1:10 splitter. CAT5 4:2 merger and a DMX 1:10 splitter. CAT5 data network consist of a small Class A IP network for lighting and sound control in control room which can be patched into from anywhere in Theatre.

## House/Working Light:

The house-lighting system consists of incandescent downlights on ETC Sensor dimmers which can be controlled via the lighting console or pre-set panels in the control room and at either side of the stage.

The working-light system consists of fluorescent and Metal Halide flood units controlled by switch panels on either side of the stage.

There is a full 'Blue' performance lighting system throughout the Theatre using LED units controlled at the working-light switch panels.

## Equipment:

There is an inventory of generic fixtures available including ETC Source 4, ETC Source 4 Parnels, Selecon Pacific profiles and Hui floods, generic pars and birdies. There is also a stock of lighting stands and accessories and additional 16Amp and Socapex extensions.

Further information is included in the Lantern Schedule.

## Colour/Gobo Media:

The venue holds a small stock of standard colour, the visiting company must supply all colour gel and gobos required that are not part of the standard stock.

Special Effects:

An additional stock (including Chauvet Rogue 2 and Q-Wash560Z LED moving heads, Chauvet COLORado 1-Tri Tour, Look Solutions Viper Nt smoke machine, Look Solutions Unique 2.1 hazer, one Chauvet Bubble King bubble machine and two High End Data flash AF1000 strobes) is available for use, though use of these must be agreed when the contract is agreed – and may incur a cost based on use.



# Sound & Video Specifications

## Projector:

The Theatre is equipped with a Christie DW5K, 3500 lumen 3-chip DLP projector (16:9 or 4:3 aspect ratio). This is located at the centre of upper balcony for front projection application and cannot be moved, though the lens can be remotely repositioned, zoomed, and focused.

## Projection Screen:

There is a dedicated roll-up projection screen with motorised winch – 5m wide x 4m high hung centrally at 2.15m from front of stage. Projector can also be refocused for projecting a full stage image onto Cyclorama Upstage (though there is a slight drop in quality due to projecting onto a non-projection surface).

## Video Tie-Lines:

There are Coaxial BNC video connections in auditorium, on-stage and fly-floor. There are dedicated CAT5 connections for point-to-point Video, VGA and HDMI at projector position, fly-floor and on Downstage Right. All BNC and CAT5 video tie-lines terminate at patch panels in control room.

## Projection Applications:

As standard the theatre has the facility for basic projection including PowerPoint presentation and DVD playback, though this must be agreed when the contract is agreed. The visiting company must supply the computer and all digital media required for presentation purposes. Any advanced video requirements must be discussed in detail with the Theatre Manager prior to get-in/hire start date.

## Audio Control:

Yamaha LS9 – 32 channel digital console

There is the ability to mix sound in the auditorium by removal of house seating (8seats) but this must be agreed when the contract is agreed.

## Speakers:

The house system is a KV2 Audio EX series consisting of:

- 6 x KV2 Audio EX10 Main Speakers – 500w 126dB 10"2-way active
- 3 x KV2 Audio EX2.2 Subwoofer – 1000w 130dB 12" active

This is augmented by QSC S52 speakers for vocal delays under the balconies.

There are a further number of speakers available for use as monitors, if not required elsewhere.

## Microphones:

The standard theatre sound system includes:

- 8 x Shure SM57 Cardioid Instrument Microphone
- 6 x Shure SM58 Cardioid Vocal Microphone

- Assorted DI boxes
- A further stock of microphones, including radio microphones (Trantec & Sennheiser), is available for use, at additional cost, if agreed in advance

#### Playback:

- 1 x Marantz CD5001 CD Player
- 1 x QLab system on a dedicated Mac-Mini
- 1 x Digidesign Digirack-002 (2 – 8 channel input/output from Mac-Mini)
- DVD & Blue-Ray Playback is available, and the sound system can be configured for Dolby 5:1 playback.

#### Sound Tie-Lines:

There are sound connection panels located in front-of-house grid and on-stage which include tie-lines for XLR balanced input/output and passive Speakon output connections.

All tie-lines terminate at patch panels in the control room.



# Show Control

## Ring Intercom:

Headset communication can be used throughout the theatre with intercom connections located in control room, auditorium, balconies, stage, stage lobbies, dimmer room, green room 2, productions office, fly-floor and front-of-house grid. The house intercom equipment consists of twelve Tecpro single channel belt packs with single muff headsets.

## Cue Lights:

There is a digital 14 channel Cue-Light system (Interspace TCB) complete with 8 outstations.

The master station may be located at any cue light point.

Points are as follows:

- Control Room
- Outside Auditorium Doors – Ground Floor
- Outside Auditorium Doors – Level 1
- Followspot position – Level 2
- Fly Floor – Level 2
- Patch Floor – Level 2
- Downstage left
- Downstage right
- Rear stage doors upstage left
- Rear stage doors upstage right

## Show Replay/Paging:

There is a backstage show relay and paging system which can be heard in the green rooms and dressing rooms. Paging microphones for announcements are located downstage right and in control room. There are also video replay feeds to both green rooms and the Atrium/Foyer outside the control room, as well as to the rear stage lobbies, fly-floor and both stage wings. Paging to the front-of-house areas is possible from the control room and there are “bar bells” controlled from the paging positions. A dedicated CD/MP3 player is provided for front-of-house background music. Paging systems are independent of the headset intercom system.

## Hearing Relay:

There is a Sennheiser Infrared broadcast system with eight personal receivers and two Induction-Loop receivers for the hard of hearing. This is only switched on if requested prior to performance.

## Miscellaneous

### Heavy Power:

CEE connections are available for heavy power requirements on stage and in the scene dock. There are two 32Amp 3-Phase and one 63Amp 3-Phase connections on Stage Right, also two 63Amp 3-Phase and one 125Amp 3-Phase on back wall of scene dock. Please note that the scene dock loading doors need to be open for power cabling to be run between scene dock and stage. The theatre does not currently have any mains distribution equipment in its inventory.

### Climate Control:

The theatre has an air handling and ventilation system that can be switched from the Control Room to either “rehearsal” half power or “performance” full power modes.

### Lift Access:

There is one lift located front-of-house allowing access to all three floors. Maximum lift capacity is 1020Kg or thirteen people.

### Internet Connection:

There are no wired or wireless internet connections available onsite for visiting companies with own computers. If there is a specific requirement for an internet connection onsite, then this must be discussed with the theatre management prior to get in or first day of hire.

### Parking:

There are limited parking spaces onsite, but more than adequate access for loading purposes. Any requirements regarding parking should be discussed prior to get in.

### Outside Equipment:

All equipment not owned by Alleyn’s School must be pre-approved by the theatre management prior to use on site.

### House Crew:

No house crew are supplied as part of the “rehearsal” hire rate. For the “performance package” hire rates, the theatre will supply one in-house technician who will be available to oversee the theatre’s equipment and all health and safety requirements. This technician will not design, rig or operate for an outside production unless discussed with the theatre management prior to get in. Additional in-house technical crew are available, but this must be discussed when contract is agreed and will incur additional cost.

### House Schedule:

- Rehearsal and Performance packages cover a 9-hour day between the times 8:00am and 10:00pm. A multi-Performance package covers 10 hours between the same hours.
- Any additional time required must be discussed with the theatre management when the contract is agreed and will incur and additional cost.

## Lighting Equipment Inventory

Control Equipment	
Strand Light Palette Classic – 1500 channel	1
Avolites Pearl – Tiger Touch	1
ELC Focus Hand – Universal DMX Riggers Remote	1
Generic Lanterns	
ETC Source 4 Panel	24
Par 64	12
Selecon Pacific12/28	8
ETC Source 4 Jnr	6
ETC Source 4 19'	12
ETC Source 4 26'	10
ETC Source 4 36'	6
ETC Source 4 50'	2
Hui x 4 Batten	6
Hui Flood	4
Birdie Par 16	8
Special Effects	
Chauvet Rouge R2 Spot LED	6
Chauvet Q-Wash 560 LED	6
Chauvet COLORado 1-Tri Tour LED	8
LED Par 56	10
HQ Power DMX Stage Blinder	2
400w UV Cannon	2
HES DataFlash AF1000	2
Chroma Q Junior Effects Gobo Rotator (to fit ETC Source 4 Junior)	2
Look Solutions Viper Nt Smoke Machine	1
Look Solutions Unique 2.1 Hazer	1
Chauvet Bubble King Bubble Machine	1